

THE POWER OF PLANNING



CPEX 2020
ANNUAL REPORT



CENTER *for* PLANNING EXCELLENCE

Since CPEX's inception in 2006, we've engaged in more than 70 planning processes in Louisiana, serving to:

- Revitalize downtowns and historic corridors
- Create walkable, bikeable neighborhoods
- Address flood risk and help communities adapt to climate change
- Support sustainable coastal development
- Advance good governance
- Lift up diverse community voices to envision Louisiana's future

This work is more important than ever as we face generational challenges related to climate change, public health, and equity. CPEX continues to bring the power of planning to partnerships at all scales to build a strong, resilient future for all who call Louisiana home.

2020

THE WORK CONTINUES

2020 was turned upside down by the COVID-19 pandemic. Once again, we're witnessing the many ways that long-standing racial, economic, and health disparities compound the impacts of disaster—inequities that must be addressed as we plan for a future shaped by climate change. Under extraordinary conditions, CPEX doubled down on climate adaptation, community planning, and healthy community design. We created new partnerships to understand and help temper COVID-19's impacts across the state, all while pivoting our work and engagement practices to keep our staff, partners, and communities safe.

VISION

COVID-19 RESPONSE

Partnered with UrbanFootprint, food banks, and other local organizations to develop and deploy the COVID-19 Recovery Insights Platform to better understand the pandemic's effects on housing, employment, and food insecurity; identify areas of growing need; and enable targeted resource allocation at the state and local levels.



ONGOING: Partnership with LSU AgCenter to implement Complete Streets Action Plan items like crosswalks, safer on-street parking, and bike repair stations in Madison, Tensas, and St. Helena parishes—places experiencing some of the greatest health disparities in Louisiana.

Provided planning services to Southern University, Scotlandville, Opelousas, Lafayette, and St. John the Baptist, St. Helena, Tensas, and Madison parishes to elevate local culture, promote active transportation, reduce risk, spur economic activity, and revive neighborhoods and downtowns.



COMMUNITY PLANNING

ONGOING: Partnership with Blue Cross Blue Shield of Louisiana to examine the relationship among complete streets, parks, and health.



CPEX launched a webinar series addressing city planning needs in the wake of COVID-19—including transit, food insecurity, and vulnerability, and what it will take to achieve Complete Neighborhoods.

NEIGHBORHOOD PLANNING

Engaged Baton Rouge residents to think about their neighborhoods in a new way with the 20-Minute Neighborhood Bingo Challenge.



RESIDENT VISION

Collaborated with Scotlandville neighborhood groups to create a plan to implement the community's vision for revitalizing the area and strengthening North Baton Rouge.



ADAPTING TO CLIMATE CHANGE

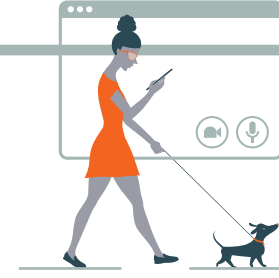
ONGOING: Facilitating the Louisiana Watershed Initiative working group, focused on aligning state agencies toward a watershed-based approach to flood risk.

Governor Edwards signed Executive Order JBE 2020-19, establishing a Chief Resilience Officer and charging state agencies with coordinating their efforts toward climate adaptation. CPEX's Adaptive Governance Initiative is facilitating this work in partnership with the Governor's Office of Coastal Activities.

PLANNING

The Virtual Smart Growth Summit engaged 1,600 people from 7 countries. Panels included thought leadership on how pandemics of the past have shaped urban planning, giving us insight into modern-day responses.

EDUCATE



2021

WHAT'S NEXT?

In 2021, planning great communities means planning for equity, for health, and for climate change. CPEX will continue to address these issues through our thought leadership, planning expertise, and policy advocacy across Louisiana—creating livable, resilient places for all. Here are just a few things we're looking forward to.



The Governor's Office announced the Climate Initiatives Task Force, established to identify strategies for achieving net-zero greenhouse gas emissions by 2050. CPEX staff is serving on the task force and its subcommittees.

ENGAGE

Ran a COVID-compliant public meeting in Opelousas for the Downtown Development District Master Plan, enabling the integration of community input into the draft plan recommendations.



Playing a part in drafting Louisiana's Climate Action Plan as CPEX staff contributes to the work of the Climate Initiative Task Force and its subcommittees.

"Great communities are communities that work for everyone. If Louisiana is to realize its full potential, equity must be at the center of our vision for the future and at the forefront of our planning processes."

— Camille Manning-Broome, President & CEO, CPEX

Continuing to work with communities throughout the state to plan resilient, inclusive, and economically sustainable futures for their citizens.



Continuing our partnership with state agencies to advance the Adaptive Governance Initiative and Louisiana Watershed Initiative—coordinating resources and utilizing data in transformative ways to reduce risk, assess vulnerability, plan for climate adaptations, and manage our watershed wisely.

Introducing the Louisiana Healthy Community Design Guide and developing new partnerships with health sector entities to build on our goal of ensuring that community planning results in better health outcomes for all residents.

Learn more about CPEX and all those who make our efforts possible on the reverse side.

PROGRESS

FUNDERS

Blue Cross and Blue Shield of Louisiana Foundation

Foundation for Louisiana

Greater New Orleans Foundation

Huey and Angelina Wilson Foundation

Irene W. and C.B. Pennington Foundation

The Kresge Foundation

Louisiana Healthy Communities Coalition

McKnight Foundation

Southern University System Foundation

Walton Family Foundation



SUSTAINED GIVING

In 2020, CPEX celebrated 30 members who have supported CPEX with 10 years of giving. Thanks to these special members for their ongoing commitment to the CPEX mission.

CPEX also launched the Visionary Circle and Corporate Partner membership options in 2020. Visionary Circle members commit to an annual gift of at least \$1,000 for five years, and Corporate Partners support CPEX with a gift of at least \$2,500 annually.

2020 MEMBERS

CPEX members are the champions who help us realize our vision for a strong Louisiana. They recognize our state's unique assets and challenges and invest in our shared future by supporting vision and planning for resilient, livable, and equitable communities.

Membership contributions provide critical support for CPEX's thought leadership, neighborhood engagement, smart growth advocacy, and good governance work that is not funded by grants or contracts.

\$25,000 +

Cordell and Ava Haymon ■●

\$10,000 +

The John A. Thomas and Elizabeth "Boo" Thomas Family Fund ●

\$5,000 +

Laurie Aronson

Blue Cross and Blue Shield of Louisiana ●

Charles W. Lamar III, Charles Lamar Family Foundation ●◇

Petroleum Service Corporation ●●

John G. Turner and Jerry G. Fischer ●

\$2,500 +

AARP Louisiana ●●

Beverly Coates

Cathy Coates and Brian Hales ●◇

Hancock Whitney ●●

Virginia and John Noland

Stone Pigman Walther Wittmann L.L.C. ●●

Stonehenge Capital ●

Erin Monroe Wesley // Cox Communications ●

Joanna Wurtele ●◇

\$1,000 +

Alden and Margaret Laborde Foundation

Roger Alden and Marcia G. Moser

Alma Lee, Norman and Cary Saurage Fund

Terrell and Mary Kay Brown ●

Capital Area Finance Authority

Preston & Marian Castille ■◇

Steve Cochran ■

Douglass S. Coleman ●

\$500 +

Jim and Janie Brandt ●◇

BREC Foundation

Steve Carville, Milton J. Womack, Inc.

Helena and Kevin Cunningham ◇

Roberta A. Guillory ●

Brian and Barbara Haymon

Dr. Steve and Mrs. Beverly Heymsfield

Josef Sternberg Memorial Fund

Kevin and Debbie Knobloch ●

Latter & Blum Property Management, Inc. ●

\$250 +

Ascension Economic Development Corporation

Warren + Brenda Birkett

Renee Chatelain and Kevin Lyle ●

Charles and Peggy Coates ●

Patricia A. Day and Joseph G. Simmons ●

William Deville

Charles P. Freeburgh

Alice and Bob Greer ●

Hannis T. Bourgeois, LLP

Ronald Harrell, Kentwood Forward

Chris and Kelsey Funes ■

Kidder & Schultz CPAs, LLC ■

Looney Ricks Kiss / LRK ●

Camille Manning-Broome and Devin Broome ■◇

Moyses Family Foundation ●

Phelps Dunbar LLP

Deborah Sternberg, Board Member

Anne and Andy Thomas ●

WHLC Architecture ●■

Lard Oil Company

Conville and Polly Lemoine

Jeannine & Tim Lomax

Jay Noland ●

Linda and Mark Posner

Provident Resources Group

Ritter Maher Architects, LLC

Charles E. Schwing

Mike Wampold

Jessica Rury Keasler

Arthur Lancaster @ Lancaster Construction, LLC

Susan P and F Barrow Leake

Robert and Judith Levy ●

Kathy and Frank McArthur ●

Kenya and Quentin Messer

Stephen and Heather Moret

M. Christian Mounger

Roger Ogden ●

Pat O'Neil-Moergeli

Nial Patel

Up to \$200

Carlee Alm-LaBar ◇

Maya Bennett

Nancy B. Bogan

Bradley-Blewster & Associates ◇

City of Gonzales

Rev. Dr. Elenora Mackey Cushenberry ◇

Thomas Douthat ◇

Kyle and Heather Finke ◇

Barbara Freiberg ◇

Caroline Gallaspy ◇

Kimberly Goodell ◇

Richard and Holley Haymaker ◇

Wendy & Mike Herschman

Ralph Ibarra ◇

Mary Terrell Joseph ●◇

Toni Keating ◇

Jessica and Duncan Kemp ◇

Linda Kirksey ◇

Lauren and Corey Knotts

Devin Lemoine ◇

David Lindenfeld ◇

Parker and Lauren Marschall ◇

Susan Marschall ◇

Chase and Amy McCalip

Penny Foundation Inc.

Reich Landscape Architecture

Michelle Robnik ◇

Kelcee Smith ◇

Janet Tharp and Clifton Coffey ◇

Steve and Monica Winkler

NOTATIONS

- 10 Year Members
- Visionary Circle Members
- Corporate Partners
- ◇ 225 Gives

2020 STAFF & BOARD

STAFF MEMBERS

Oscar Almengor
Intern

Edward D. Anthony III, PMP
Planner & Project Manager

Ryan Benton, PLA
Project Manager

Jeannette Dubinin
Director of Resilience & Adaptation

Heather Finke
Outreach Coordinator

Joni Hammons
Project Manager

Lyneisha Jackson, AICP
Community Planner

Kendall Keating, MBA
Business Associate & Executive Assistant

Jessica Kemp, PhD
Vice President

Justin Kozak, PhD, CFM
Project Manager

Justin Lemoine, PLA
Director of Implementation

Camille Manning-Broome
President & CEO

Lauren Marschall, AICP
Director of Operations

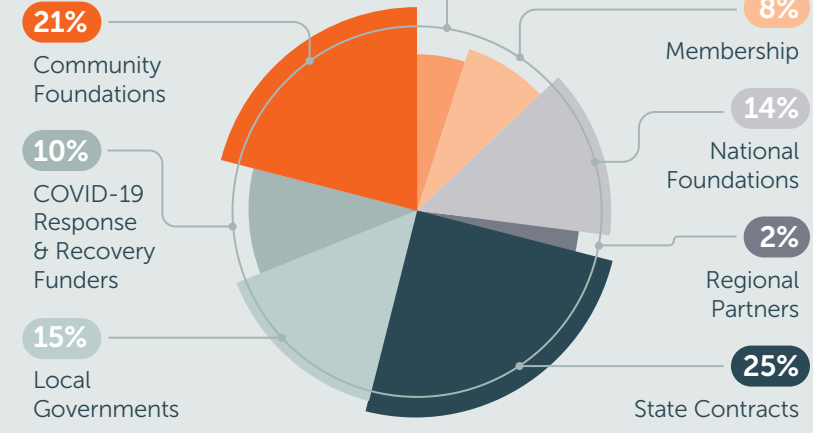
Hannah Robnik
Social Media & Outreach Coordinator; Serve Louisiana Member

Janet Tharp
Director of Planning

Macey Williams
Smart Growth Summit Intern

Jennafer Zimmerman
LA Service and Leadership Scholar, a cohort within the LSU Ogden Honors College

2020 TOTAL REVENUE \$2,407,574



BOARD MEMBERS

Preston Castille, Jr., *Chair President, Helix Community Schools*

Jim Brandt, *Vice Chair Owner, Brandt + Associates*

Robert Schneckeburger, *Treasurer Senior Regional President—Western Region, Hancock Whitney Bank*

Kelsey Kornick Funes, *Secretary Partner, Phelps Dunbar LLP*

George Bell
President & CEO, Capital Area United Way

Steve Cochran
Director, Restore the Mississippi River Delta Coalition; Vice President, Coastal Resilience, Environmental Defense Fund

Helena Cunningham
Founder & CEO, National Housing Consultant Services

Ronnie Daigle
President, R.J. Daigle & Sons Contractors, Inc.; Co-CEO, Daigle Industries

Cordell H. Haymon
Senior Vice President (ret.), Petroleum Service Corporation

Camille Manning-Broome
President & CEO, Center for Planning Excellence

Dr. Kenya LeNoir Messer
President & CEO, Louisiana Association of Independent Colleges and Universities

Dr. Somesh Nigam
Senior Vice President and Chief Analytics & Data Officer, Blue Cross Blue Shield of Louisiana

Paul Rainwater
Senior Consultant, Cornerstone Governmental Affairs

Randy P. Roussel
Partner, Phelps Dunbar LLP

Ashley K. Shelton
President & CEO, Power Coalition

James E.A. Slaton
Member, Stone Pigman Walther Wittman, LLC

Deborah Sternberg
Chair, Young Entrepreneurs Academy Baton Rouge

Dr. Robert R. Twilley
Executive Director, Louisiana Sea Grant

Erin Monroe Wesley
Southeast Vice President of Government and Public Affairs, Cox Communications



CPEX.org